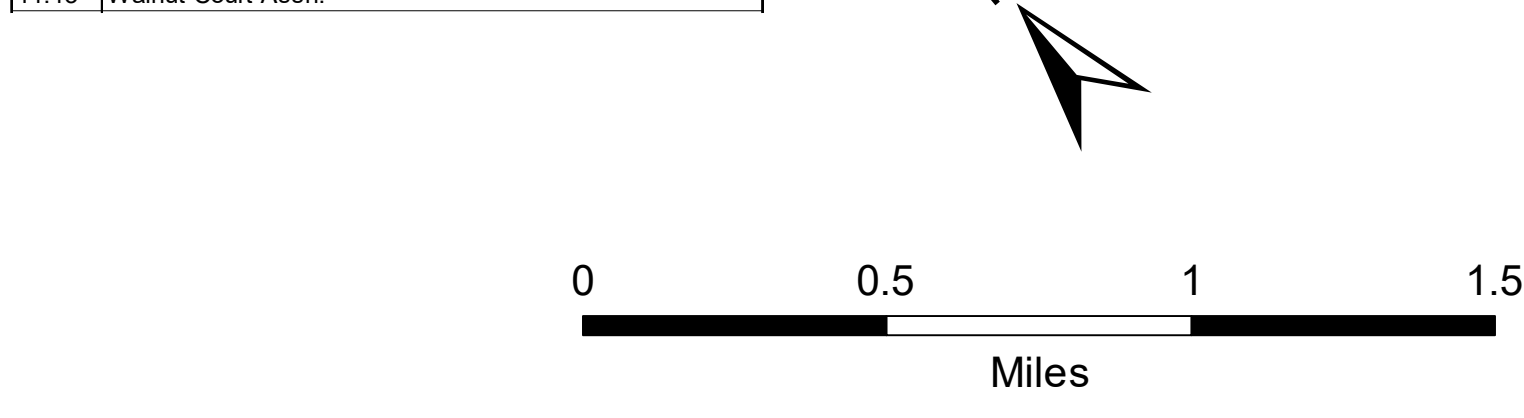
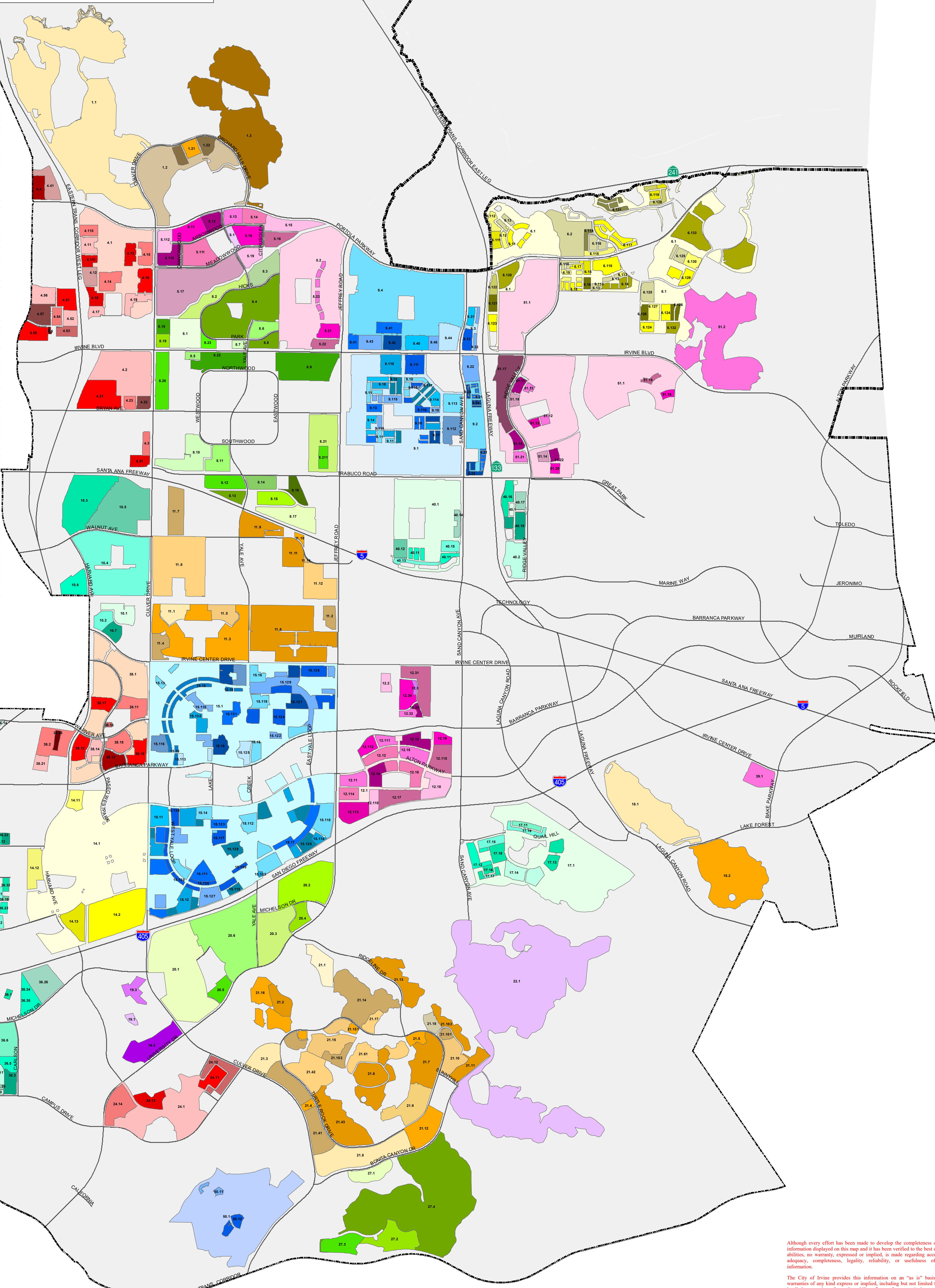




# Homeowner Associations City of Irvine

1.1	Grow at Orchard Hills Community Assn.	12.1	Oak Creek Village Maint. Assn.	36.1	Marquee at Park Place Maintenance Assn.
1.2	Orchard Hills Village II Community Assn.	12.11	Cobblestone	36.2	Metropolitan Condominium Assn.
1.21	Enfrata Neighborhood Assn.	12.12	Oak Park	36.3	Watermark Condos
1.22	Vista Scena Neighborhood Assn.	12.13	Autum Glen	36.4	Soft Apartments
1.3	Resene at Orchard Hills Community Assn.	12.14	Cypress Community Assn.	36.5	Toscana Apartments
3.1	Northpark Community Assn.	12.15	The Cricket Club Maint. Corp.	36.6	Vista Sierra Apartments
4.1	San Simeon Maintenance Assn.	12.16	Kenwood	36.7	Central Park West Assn.
4.12	Evergreen Homeowners Assn.	12.17	Ashford Place Maintenance Assn.	36.8	Axis 2300
4.13	Huntington	12.18	Kelsey Lane Maintenance Assn.	36.9	The Carlyle @ Cotton Plaza
4.14	Camelia	12.19	Alsea Maintenance Assn.	36.10	The Plaza Inve. Condos (Phase I / II)
4.15	Brentwood	12.110	Mortilla	36.11	Kelvin Court
4.16	Brisbane	12.111	Cypress North	36.12	Camden Apartments
4.17	Terra Bella	12.112	Acacia	36.13	Calypso Apartments and Lofts
4.18	San Diego	12.113	Brittany Apts.	36.14	Inve. In
4.19	Medocino	12.114	Sonoma Apts.	36.15	Campus & Jamboree Assn.
4.110	Auburn	12.115	Oak Glen Apts.	36.151	Avenue One Condos Assn.
4.111	Monterey	12.2	Tarocco	36.152	3000 The Plaza Irvine Homeowners Assn.
4.2	Northpark Square Master Assn.	12.3	Orange Tree Master Assn.	36.16	Avalon Inve. Phase II
4.21	Bella Rosa	12.31	Orangefree Patio Homes	36.17	Avalon Irvine
4.22	San Juan Bautista	12.32	Orange tree Terrace	36.18	Main Street Village Apts.
4.23	Monticello Inve. Community Assn.	12.33	Orangefree Villas	36.19	Granite Court Apts.
4.3	Trailing Vine Maintenance Assn.	12.34	Orangefree Condos	36.20	Campus Center Apts. Expansion
4.31	Tamarisk Community Assn.	14.1	Westpark Maintenance District	36.21	2801 Kelvin Avenue
4.4	Sheridan Master Assn.	14.11	Westpark Corte Bella Community Assn.	36.22	2851 Alton Parkway
4.41	Sheridan Place	14.12	Westpark Tempo Community Assn.	36.23	Modera Apts.
4.5	West Inve. Homeowners Assn.	14.13	Westpark Las Palmas	36.24	Westpark Inve. Phase II
4.51	Wisteria Maintenance Assn.	14.2	Westpark Village I / Culverdale Assn.	36.25	Metropolis
4.52	Mandeville	15.1	Woodbridge Village Master Assn.	36.26	Park Place Apts.
4.53	Andover	15.11	Albers Maintenance	36.27	Equity Residential Apts. I
4.54	Summitplace Community Assn.	15.12	Chateau Maintenance	36.28	Equity Residential Apts. II
4.55	Ivywood	15.13	Centerview Maintenance	36.29	Irvine Gateway
4.56	Concord	15.14	Chateaux Maintenance	36.30	Elements
4.57	Barrington	15.15	Estates Main. Assn.	36.31	Milani Apts. 18831 Von Karman
5.1	Northwood Fronts Maintenance Assn.	15.16	Fairfield Maintenance	36.32	360 Fusion Apts.
5.11	Lanewood Homeowners Assn.	15.17	Garden Estates Maintenance	36.33	Main & Jamboree Apts.
5.12	Collage	15.18	Hollygrove Maintenance	36.34	Vino at Park Place
5.13	Georgetown at Northwood Homeowners Assn.	15.19	Lakewood Maintenance	36.35	Park Place Inve.
5.14	Lexington	15.110	Lakewood Maintenance	36.36	17275 Desco
5.15	Somerton	15.111	Somerset Assn.	36.37	2680 Barranca/16542 Millikan
5.16	Arbor Crest II Community Assn.	15.112	Lakeside Maintenance	36.38	2152 - 2182 Alton
5.17	Trailwood Maintenance Assn.	15.113	Lakeside Maintenance	36.39	2802 McGraw
5.18	Arbor Crest Community Assn.	15.114	Lakota Maintenance	36.40	Paloma Apts.
5.19	Rosegate Maintenance Assn.	15.115	Park Vista Maintenance	36.41	2525 Main
5.110	Northwood Villa Maintenance Assn.	15.116	Parkview Maintenance	36.42	17861 Cartwright
5.111	Canyon View Maintenance Assn.	15.117	Seaview Maintenance Assn.	36.43	17822 Gillette
5.112	Arden Square Homeowners Assn.	15.118	Seasons Maintenance	36.44	17811 Gillette
5.2	Eastwood Village Community Assn.	15.119	Shoreline Maintenance	36.45	17821 Gillette
5.21	Helena Neighborhood Assn.	15.120	Woodbridge Stonegate Maintenance	36.46	2055 Main
5.22	Avalon Neighborhood Assn.	15.121	Village Glen Assn.	36.47	Campus & Von Karman Apts.
5.23	Delano Neighborhood Assn.	15.122	Village Green Assn.	36.48	Passo Westpark Maintenance Assn.
6.1	Portola Springs Community Assn.	15.123	Willow Creek Maintenance Assn.	38.11	Positano Homeowners Assn.
6.11	Paloma Homeowners Assn.	15.124	Willow Grove Maintenance Assn.	38.12	Brindal Homeowners Assn.
6.12	Paloma Community Assn.	15.125	Woodbridge Cove	38.13	Brio Homeowners Assn.
6.13	Casero Community Assn.	15.126	Woodbridge Parkside Maintenance	38.14	Aventura Community Assn.
6.14	Vientos Maintenance Assn.	15.127	Parkway Maintenance Assn.	38.15	Ravenna
6.15	San Carlos North Community Assn.	15.128	Shore Maintenance	38.16	Tortuga
6.16	San Carlos South Community Assn.	15.129	Yale Estates Maintenance	38.17	Tristara
6.17	Decada	15.130	Ivyhill Maintenance	38.18	Santa Rosa Apts.
6.18	Los Arboles	15.131	Arborlake Maintenance	38.2	Columbus Grove Community Assn.
6.19	Boulevardville	15.132	Willows Maintenance Assn.	38.21	Savannah Motorcourt Townhomes
6.110	Portola Place Apts.	15.133	South Lake Villas Assn.	38.22	Kensington Court at Columbus Grove
6.111	Ironwood	17.1	Quail Hill Community Assn.	39.1	Barcelona Community Assn.
6.112	Sevilla Community Assn.	17.11	Ambridge Maintenance	40.1	Cypress Village Community Assn.
6.113	Sendero	17.12	Casalon	40.11	Caserta
6.114	Luna Neighborhood Assn.	17.13	Ivy Weath	40.12	Jade Court
6.115	Agave Neighborhood Assn.	17.14	Linden & Laurel Maintenance	40.13	Acacia Neighborhood Assn.
6.116	Colibri Neighborhood Assn.	17.15	Sage West	40.14	Caserta Neighborhood Assn.
6.117	Garden Hill / Sage	17.16	Sandalwood Community Assn.	40.15	Zinnia Neighborhood Assn.
6.118	Primrose	17.17	Solstice Community Assn.	40.16	Tristara Neighborhood Assn.
6.119	Brisa Neighborhood Assn.	17.18	Jasmine Community Assn.	40.17	Lantana Neighborhood Assn.
6.120	Sage Neighborhood Assn.	17.19	Sage East	40.18	Trellis Neighborhood Assn.
6.121	Carle Neighborhood Assn.	18.1	Laguna Altura Community Assn.	40.2	Travata Community Assn.
6.122	Cinco Neighborhood Assn.	18.2	Hidden Canyon Community Assn.	50.1	University Hills Community Assn.
6.123	Willow Neighborhood Assn.	19.1	Vista San Joaquin Homeowners Assn.	50.11	URHCOA I
6.124	Indigo Neighborhood Assn.	19.2	Rancho San Joaquin	50.12	URHCOA II
6.125	Legado Neighborhood Assn.	19.3	Villas at Rancho San Joaquin	51.1	Great Park Neighborhoods Community Assn.
6.126	Shirley Neighborhood Assn.	20.1	University Community Assn.	51.11	Brio at Beacon Park
6.127	The Vine Neighborhood Assn.	20.2	Terrace Community Assn.	51.12	Rowland at Beacon Park
6.128	Celeste Neighborhood Assn.	20.3	Parkside Community Assn.	51.13	Primrose at Beacon Park
6.129	Juniper at Portola Springs Homeowner Assn.	20.4	Parkwood Apt.	51.14	Lanterns at Parasol Park
6.130	Montara Neighborhood Assn.	20.5	Parkcrest Community Assn.	51.15	Windlume at Parasol Park
6.131	Talisse Neighborhood Assn.	20.6	Village Park Community Assn.	51.16	Chorus at Cadence Park
6.132	Carissa Neighborhood Assn.	21.1	Concordia East	51.17	Novo, Fringe, Modo & Verge at Novel Park
6.2	Lambert Ranch Maintenance Corporation	21.2	Concordia West	51.18	Opus at Beacon Park
6.3	Woodbury Inve. Homeowners Assn.	21.3	Broadmoor Campus View Community Assn.	51.19	Muse at Cadence Park
6.4	Northwood Homeowners Assn.	21.4	Turtle Rock Park and Recreation	51.20	Amethyst at Parasol Park
6.5	Canyon Creek Homeowners Assn.	21.41	Turtle Rock Broadmoor	51.21	Sterling at Parasol Park
6.6	Park Paseo Homeowners Assn.	21.42	Turtle Rock Hills Community Assn.	51.22	Cadalon at Parasol Park
6.7	Schiffel Manor Homeowners Assn.	21.43	Turtle Rock Terrace Community Assn.	51.23	Altair Inve. Master HOA
6.8	The Lakes Association	21.5	Skyview Community Assn.		
6.9	Northwood Square Townhomes Assn.	21.6	Turtle Rock Crest Community Assn.		
6.10	The Springs	21.61	Turtle Rock Crest Maintenance Assn.		
6.11	The Groves Association	21.7	Highlands Community Assn.		
6.12	Northwood Courtside Community Assn.	21.8	Sierra Bonita Community Assn.		
6.13	Northwood Glen Homeowners Assn.	21.9	Sun Ridge Community Assn.		
6.14	Northwood Timberline Homeowners Assn.	21.10	Turtle Rock Ridge Assn.		
6.15	Northwood Classics	21.101	Sunset Ridge (Rainbow Ridge) Maintenance		
6.16	Northwood Horizons	21.11	Turtle Rock Meadows		
6.17	Northwood Villas	21.12	Sierra Broadmoor		
6.18	Northwood Place Apartments	21.13	Turtle Rock Pointe Homeowners Assn.		
6.19	Crestwood Estates	21.14	Turtle Rock Summit Estates		
6.20	Orchard Glen	21.15	Turtle Rock Glen Master		
6.21	Vista Filare	21.151	Turtle Rock Town Homes Maintenance		
6.22	Northwood II Community Assn.	21.152	Turtle Rock Garden Homes Maintenance		
6.23	Sundance	21.16	Turtle Rock Vista Community Assn.		
6.24	Woodbury Community Assn.	21.17	Turtle Rock Summit Towne Collection Assn.		
6.25	Woodbury Community Assn.	21.18	Turtle Rock Ridge Garden Home Assn.		
6.26	Woodbury Community Assn.	21.19	Shady Canyon Community Assn.		
6.27	Woodbury Community Assn.	21.20	University Town Center Assn.		
6.28	Woodbury Community Assn.	21.21	Columbia Square Maintenance		
6.29	Woodbury Community Assn.	21.22	Cambridge Court Maintenance Assn.		
6.30	Woodbury Community Assn.	21.23	Oxford Court		
6.31	Woodbury Community Assn.	21.24	Princeton Townhomes		
6.32	Woodbury Community Assn.	27.1	Canyon Edge		
6.33	Woodbury Community Assn.	27.2	Arbor & Chantory Maintenance Assn.		
6.34	Woodbury Community Assn.	27.3	Green Glen Neighborhood Assn.		
6.35	Woodbury Community Assn.	27.4	Summit at Turtle Ridge		
6.36	Woodbury Community Assn.				
6.37	Woodbury Community Assn.				
6.38	Woodbury Community Assn.				
6.39	Woodbury Community Assn.				
6.40	Woodbury Community Assn.				
6.41	Woodbury Community Assn.				
6.42	Woodbury Community Assn.				
6.43	Woodbury Community Assn.				
6.44	Woodbury Community Assn.				
6.45	Woodbury Community Assn.				
6.46	Woodbury Community Assn.				
6.47	Woodbury Community Assn.				
6.48	Woodbury Community Assn.				
6.49	Woodbury Community Assn.				
6.50	Woodbury Community Assn.				
6.51	Woodbury Community Assn.				
6.52	Woodbury Community Assn.				
6.53	Woodbury Community Assn.				
6.54	Woodbury Community Assn.				
6.55	Woodbury Community Assn.				
6.56	Woodbury Community Assn.				
6.57	Woodbury Community Assn.				
6.58	Woodbury Community Assn.				
6.59	Woodbury Community Assn.				
6.60	Woodbury Community Assn.				
6.61	Woodbury Community Assn.				
6.62	Woodbury Community Assn.				
6.63	Woodbury Community Assn.				
6.64	Woodbury Community Assn.				
6.65	Woodbury Community Assn.				
6.66	Woodbury Community Assn.				
6.67	Woodbury Community Assn.				
6.68	Woodbury Community Assn.				
6.69	Woodbury Community Assn.				
6.70	Woodbury Community Assn.				
6.71	Woodbury Community Assn.				
6.72	Woodbury Community Assn.				
6.73	Woodbury Community Assn.				
6.74	Woodbury Community Assn.				
6.75	Woodbury Community Assn.				
6.76	Woodbury Community Assn.				
6.77	Woodbury Community Assn.				
6.78	Woodbury Community Assn.				
6.79	Woodbury Community Assn.				
6.80	Woodbury Community Assn.				
6.81	Woodbury Community Assn.				
6.82	Woodbury Community Assn.				
6.83	Woodbury Community Assn.				
6.84	Woodbury Community Assn.				
6.85	Woodbury Community Assn.				
6.86	Woodbury Community Assn.				
6.87	Woodbury Community Assn.				
6.88	Woodbury Community Assn.				
6.89	Woodbury Community Assn.				
6.90	Woodbury Community Assn.				
6.91	Woodbury Community Assn.				
6.92	Woodbury Community Assn.				
6.93	Woodbury Community Assn.				
6.94	Woodbury Community Assn.				
6.95	Woodbury Community Assn.				
6.96	Woodbury Community Assn.				
6.97	Woodbury Community Assn.				
6.98	Woodbury Community Assn.				
6.99	Woodbury Community Assn.				
7.00	Woodbury Community Assn.				



Sources:  
The Irvine Company  
Several Homeowner Associations

Although every effort has been made to develop the completeness of the information displayed on this map and it has been verified to the best of our abilities, no warranty, expressed or implied, is made regarding accuracy, adequacy, completeness, legality, reliability, or usefulness of the information.  
The City of Irvine provides this information on an "as is" basis. All warranties of any kind express or implied, including but not limited to the implied warranties of merchantability, fitness for a particular purpose, freedom from contamination by computer viruses and non-infringement of proprietary rights, ARE DISCLAIMED.