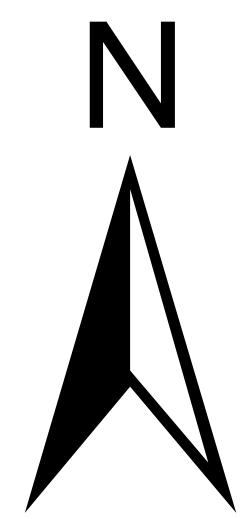
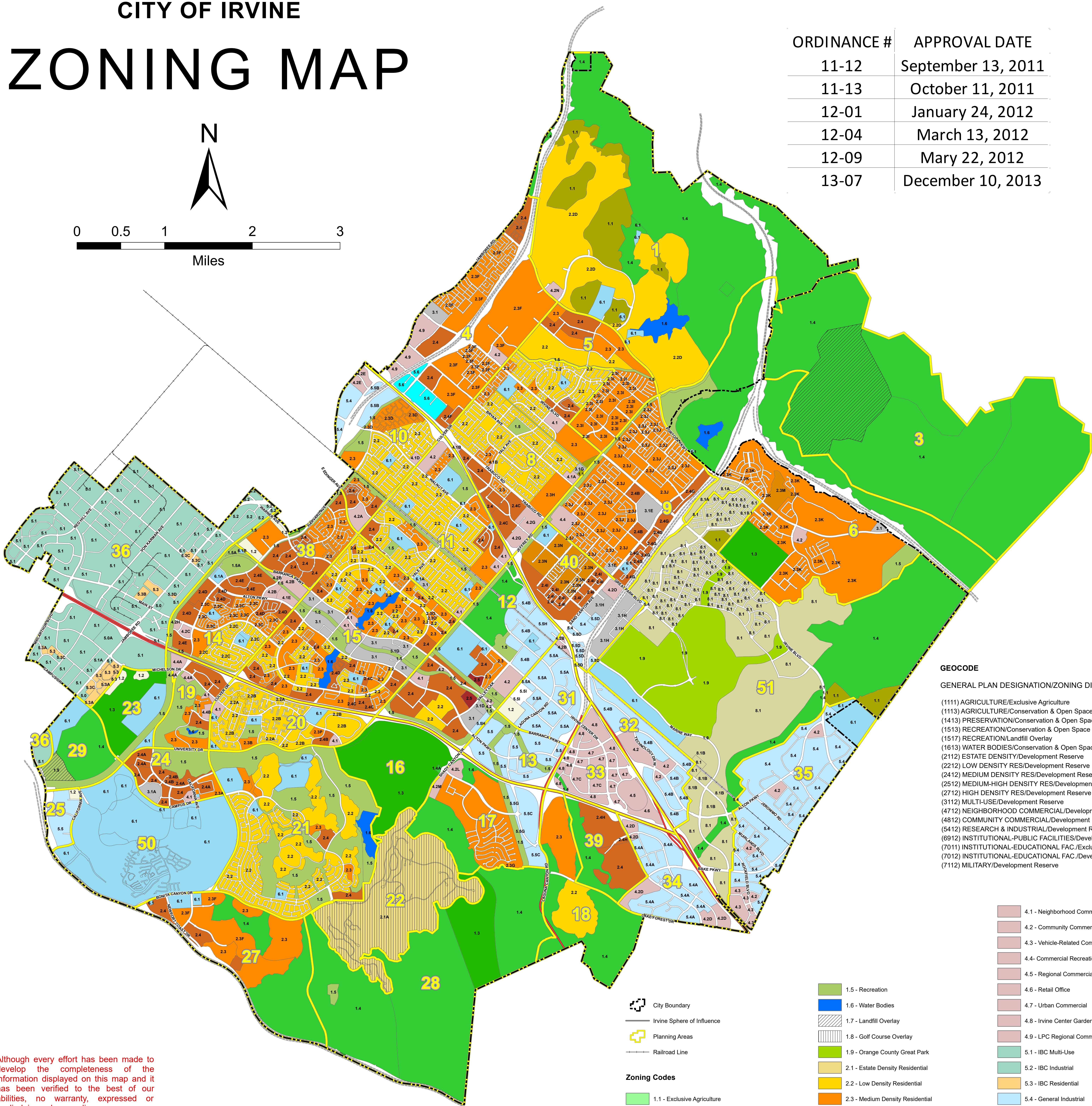


# CITY OF IRVINE ZONING MAP



ORDINANCE #	APPROVAL DATE
11-12	September 13, 2011
11-13	October 11, 2011
12-01	January 24, 2012
12-04	March 13, 2012
12-09	May 22, 2012
13-07	December 10, 2013



### GEOCODE

#### GENERAL PLAN DESIGNATION/ZONING DISTRICT

- (111) AGRICULTURE/Exclusive Agriculture
- (113) AGRICULTURE/Conservation & Open Space Reserve
- (143) PRESERVATION/Conservation & Open Space Reserve
- (153) RECREATION/Conservation & Open Space Reserve
- (157) RECREATION/Landfill Overlay
- (161) WATER BODIES/Conservation & Open Space Reserve
- (212) ESTATE DENSITY/Development Reserve
- (221) LOW DENSITY RES/Development Reserve
- (242) MEDIUM DENSITY RES/Development Reserve
- (252) MEDIUM-HIGH DENSITY RES/Development Reserve
- (271) HIGH DENSITY RES/Development Reserve
- (312) MULTI-USE/Development Reserve
- (471) NEIGHBORHOOD COMMERCIAL/Development Reserve
- (481) COMMUNITY COMMERCIAL/Development Reserve
- (542) RESEARCH & INDUSTRIAL/Development Reserve
- (691) INSTITUTIONAL-PUBLIC FACILITIES/Development Reserve
- (701) INSTITUTIONAL-EDUCATIONAL FAC./Exclusive Agriculture
- (702) INSTITUTIONAL-EDUCATIONAL FAC./Development Reserve
- (712) MILITARY/Development Reserve

- City Boundary
- Irvine Sphere of Influence
- Planning Areas
- Railroad Line

#### Zoning Codes

- 1.1 - Exclusive Agriculture
- 1.2 - Development Reserve
- 1.3 - Conservation Open Space Reserve
- 1.4 - Preservation

- 1.5 - Recreation
- 1.6 - Water Bodies
- 1.7 - Landfill Overlay
- 1.8 - Golf Course Overlay
- 1.9 - Orange County Great Park
- 2.1 - Estate Density Residential
- 2.2 - Low Density Residential
- 2.3 - Medium Density Residential
- 2.4 - Medium-High Density Residential
- 2.5 - High Density Residential
- 3.1 - Multi-Use
- 4.1 - Neighborhood Commercial
- 4.2 - Community Commercial
- 4.3 - Vehicle-Related Commercial
- 4.4 - Commercial Recreation
- 4.5 - Regional Commercial
- 4.6 - Retail Office
- 4.7 - Urban Commercial
- 4.8 - Irvine Center Garden Commercial
- 4.9 - LPC Regional Commercial
- 5.1 - IBC Multi-Use
- 5.2 - IBC Industrial
- 5.3 - IBC Residential
- 5.4 - General Industrial
- 5.6 - Business Park
- 6.1 - Institutional
- 8.1 - Trails and Transit Oriented Development

Although every effort has been made to develop the completeness of the information displayed on this map and it has been verified to the best of our abilities, no warranty, expressed or implied, is made regarding accuracy.